



Contact Us  
West Palm Beach: (561) 204-3760  
Port St. Lucie: (772) 446-9238  
[www.rjmhomes.net](http://www.rjmhomes.net)  
[sales@rjmhomes.net](mailto:sales@rjmhomes.net)

## The Pinewood 4

3 Bedrooms, Den, 2 Baths,  
2 Car Garage

Living Area:	2,232 SQ. FT
Covered Entry:	166 SQ. FT
Covered Patio:	190 SQ. FT
2/Car Garage:	427 SQ. FT
Total	3,015 SQ. FT



### Key Features

The Pinewood 4 is a smaller version of our popular Pinewood Great Room plan with plenty of room for families.

- ✓ 3 Bedrooms
- ✓ Den
- ✓ 2 Bathrooms
- ✓ 2 Car Garage
- ✓ Walk-in Pantry
- ✓ Sports Shower

### About RJM Custom Homes

RJM is family owned and operated custom home builder who has built more than 1,000 homes in South Florida over the past 2 decades.



ACCREDITED  
BUSINESS



*Floorplans are intended for informational purposes and are not exact or drawn to scale.*

Copyright 2020 RJM Custom Homes

West Palm Beach: 5511 Royal Palm Beach Blvd., West Palm Beach, FL 33411

Port St. Lucie: 2951 SW Savona Blvd, Port St. Lucie, FL 34953



Contact Us  
West Palm Beach: (561) 204-3760  
Port St. Lucie: (772) 446-9238  
[www.rjmhomes.net](http://www.rjmhomes.net)  
[sales@rjmhomes.net](mailto:sales@rjmhomes.net)

## The Pinewood 5

4 Bedrooms, Den, 3 Baths,  
2 Car Garage

Living Area:	2,415 SQ. FT
Covered Entry:	166 SQ. FT
Covered Patio:	190 SQ. FT
2/Car Garage:	427 SQ. FT
Total	3,198 SQ. FT



### Key Features

*The Pinewood 5 is split plan allowing everyone to have their own space.*

- ✓ 4 Bedrooms
- ✓ Den
- ✓ 3 Bathrooms
- ✓ 2 Car Garage
- ✓ Sports Shower
- ✓ Large Laundry Room

### About RJM Custom Homes

RJM is family owned and operated custom home builder who has built more than 1,000 homes in South Florida over the past 2 decades.



*Floorplans are intended for informational purposes and are not exact or drawn to scale.*

Copyright 2020 RJM Custom Homes

West Palm Beach: 5511 Royal Palm Beach Blvd., West Palm Beach, FL 33411

Port St. Lucie: 2951 SW Savona Blvd, Port St. Lucie, FL 34953



Contact Us  
 West Palm Beach: (561) 204-3760  
 Port St. Lucie: (772) 446-9238  
[www.rjmhomes.net](http://www.rjmhomes.net)  
[sales@rjmhomes.net](mailto:sales@rjmhomes.net)

## The Pinewood 6

5 Bedrooms, Den, 3 Baths,  
 2 Car Garage

**Living Area:** 2,667 SQ. FT  
**Covered Entry:** 166 SQ. FT  
**Covered Patio:** 190 SQ. FT  
**2/Car Garage:** 427 SQ. FT  
**Total** 3,450 SQ. FT



### Key Features

The Pinewood 6 is the perfect plan for those with large families.

- ✓ 5 Bedrooms
- ✓ Den
- ✓ 3 Bathrooms
- ✓ Huge Bedroom/Game Room
- ✓ Large Laundry Room
- ✓ Sports Shower
- ✓ 2 Car Garage

### About RJM Custom Homes

RJM is family owned and operated custom home builder who has built more than 1,000 homes in South Florida over the past 2 decades.



ACCREDITED  
 BUSINESS



*Floorplans are intended for informational purposes and are not exact or drawn to scale.*

Copyright 2020 RJM Custom Homes

West Palm Beach: 5511 Royal Palm Beach Blvd., West Palm Beach, FL 33411

Port St. Lucie: 2951 SW Savona Blvd, Port St. Lucie, FL 34953



Contact Us  
West Palm Beach: (561) 204-3760  
Port St. Lucie: (772) 446-9238  
[www.rjmhomes.net](http://www.rjmhomes.net)  
[sales@rjmhomes.net](mailto:sales@rjmhomes.net)

## Pinewood Great Room

4 Bedrooms, Den, 3 Baths, 2 Car Garage

Living Area:	2,667 SQ. FT
Covered Entry:	166 SQ. FT
Covered Patio:	190 SQ. FT
2/Car Garage:	427 SQ. FT
Total	3,450 SQ. FT



### Key Features

The *Pinewood Great Room* features RJM's popular Pinewood Series layout with a large 16' x 33' great room.

- ✓ 4 Bedrooms
- ✓ Den
- ✓ 3 Bathrooms
- ✓ Large Great Room / Game Room
- ✓ Walk In Pantry
- ✓ 2 Car Garage
- ✓ Sports Shower

### About RJM Custom Homes

RJM is family owned and operated custom home builder who has built more than 1,000 homes in South Florida over the past 2 decades.



ACCREDITED  
BUSINESS

A+

*Floorplans are intended for informational purposes and are not exact or drawn to scale.*

Copyright 2020 RJM Custom Homes

West Palm Beach: 5511 Royal Palm Beach Blvd., West Palm Beach, FL 33411

Port St. Lucie: 2951 SW Savona Blvd, Port St. Lucie, FL 34953



Contact Us  
West Palm Beach: (561) 204-3760  
Port St. Lucie: (772) 446-9238  
[www.rjmhomes.net](http://www.rjmhomes.net)  
[sales@rjmhomes.net](mailto:sales@rjmhomes.net)

## Optional Elevations (The Pinewood Series)

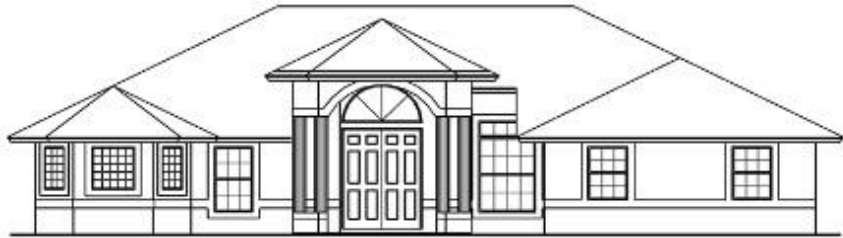
### Elevation 1

- ✓ Single Master Bath Window
- ✓ Front-Entry Garage



### Elevation 2

- ✓ Squared Windows
- ✓ 3 Master Bath Windows
- ✓ Side-Entry Garage



### Elevation 3

- ✓ 3 Master Bath Windows
- ✓ Side-Entry Garage



*Floorplans are intended for informational purposes and are not exact or drawn to scale.*

Copyright 2020 RJM Custom Homes

West Palm Beach: 5511 Royal Palm Beach Blvd., West Palm Beach, FL 33411

Port St. Lucie: 2951 SW Savona Blvd, Port St. Lucie, FL 34953