



Contact Us
 West Palm Beach: (561) 204-3760
 Port St. Lucie: (772) 446-9238
www.rjmhomes.net
sales@rjmhomes.net

The Sage

3 Bedrooms, Flex Space,
 2 Baths, 2 Car Garage

Living Area: 2,279 SQ. FT
Covered Entry: 90 SQ. FT
Covered Patio: 307 SQ. FT
2/Car Garage: 428 SQ. FT
Total 3,104 SQ. FT



Key Features

The Sage is a new RJM design featuring a large great room entry, 2 bathrooms and HUGE master closet. This floorplan is one of our new favorites because of the open design.

- ✓ Open Floorplan
- ✓ 3 Bedrooms
- ✓ Flex Space
- ✓ Large Back Patio
- ✓ HUGE master closet
- ✓ 2 Bathrooms
- ✓ 2 Car Garage
- ✓ Sports Shower

About RJM Custom Homes

RJM is family owned and operated custom home builder who has built more than 1,000 homes in South Florida over the past 2 decades.



**ACCREDITED
 BUSINESS**

A+

Floorplans are intended for informational purposes and are not exact or drawn to scale.

Copyright 2020 RJM Custom Homes

West Palm Beach: 5511 Royal Palm Beach Blvd., West Palm Beach, FL 33411

Port St. Lucie: 2951 SW Savona Blvd, Port St. Lucie, FL 34953



Contact Us
 West Palm Beach: (561) 204-3760
 Port St. Lucie: (772) 446-9238
www.rjmhomes.net
sales@rjmhomes.net

The Sage 'S'

3 Bedrooms, Den, 2 Baths

Living Area: 2,015 SQ. FT
Covered Entry: 78 SQ. FT
Covered Patio: 286 SQ. FT
2/Car Garage: 414 SQ. FT
Total 2,793 SQ. FT



Key Features

The Sage S is a new RJM design featuring an open concept with huge master closet and back patio. This new design offers 3 bedrooms, a den, 2 bathrooms, a 2 car garage, and much more.

- ✓ Open Floorplan
- ✓ 3 Bedrooms
- ✓ Den
- ✓ Large Back Patio
- ✓ HUGE master closet
- ✓ 2 Bathrooms
- ✓ 2 Car Garage

About RJM Custom Homes

RJM is family owned and operated custom home builder who has built more than 1,000 homes in South Florida over the past 2 decades.



**ACCREDITED
BUSINESS**



Floorplans are intended for informational purposes and are not exact or drawn to scale.

Copyright 2020 RJM Custom Homes

West Palm Beach: 5511 Royal Palm Beach Blvd., West Palm Beach, FL 33411

Port St. Lucie: 2951 SW Savona Blvd, Port St. Lucie, FL 34953

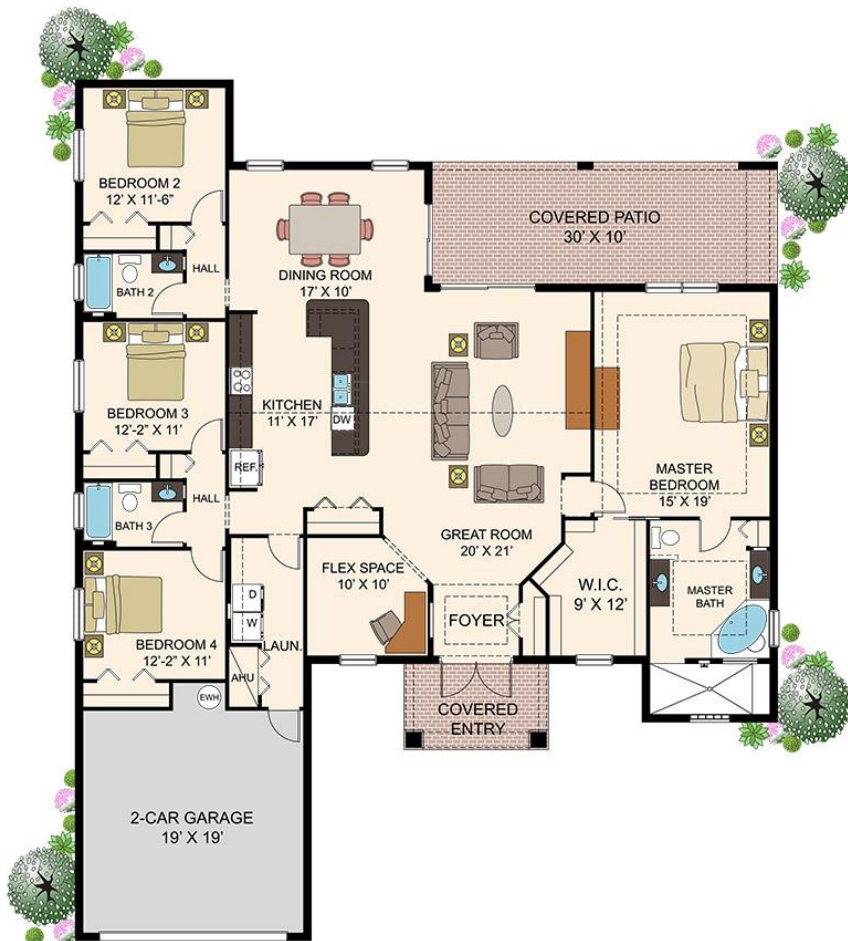


Contact Us
West Palm Beach: (561) 204-3760
Port St. Lucie: (772) 446-9238
www.rjmhomes.net
sales@rjmhomes.net

The Sage 5/3

4 Bedrooms, Flex Space,
3 Baths, 2 Car Garage

Living Area:	2,485 SQ. FT
Covered Entry:	90 SQ. FT
Covered Patio:	307 SQ. FT
2/Car Garage:	407 SQ. FT
Total	3,289 SQ. FT



Key Features

The Sage is a new RJM design featuring a large great room entry, 3 bathrooms and HUGE master closet. This floorplan is one of our new favorites because of the open design.

- ✓ Open Floorplan
- ✓ 4 Bedrooms
- ✓ Flex Space
- ✓ Large Back Patio
- ✓ HUGE master closet
- ✓ 3 Bathrooms
- ✓ 2 Car Garage
- ✓ Sports Shower

About RJM Custom Homes

RJM is family owned and operated custom home builder who has built more than 1,000 homes in South Florida over the past 2 decades.



Floorplans are intended for informational purposes and are not exact or drawn to scale.

Copyright 2020 RJM Custom Homes

West Palm Beach: 5511 Royal Palm Beach Blvd., West Palm Beach, FL 33411

Port St. Lucie: 2951 SW Savona Blvd, Port St. Lucie, FL 34953



Contact Us
 West Palm Beach: (561) 204-3760
 Port St. Lucie: (772) 446-9238
www.rjmhomes.net
sales@rjmhomes.net

The Sage 'S' 5/3

4 Bedrooms, Flex Space, 3
 Baths, 2 Car Garage

Living Area: 2,285 SQ. FT
Covered Entry: 78 SQ. FT
Covered Patio: 286 SQ. FT
2/Car Garage: 407 SQ. FT
Total 3,056 SQ. FT



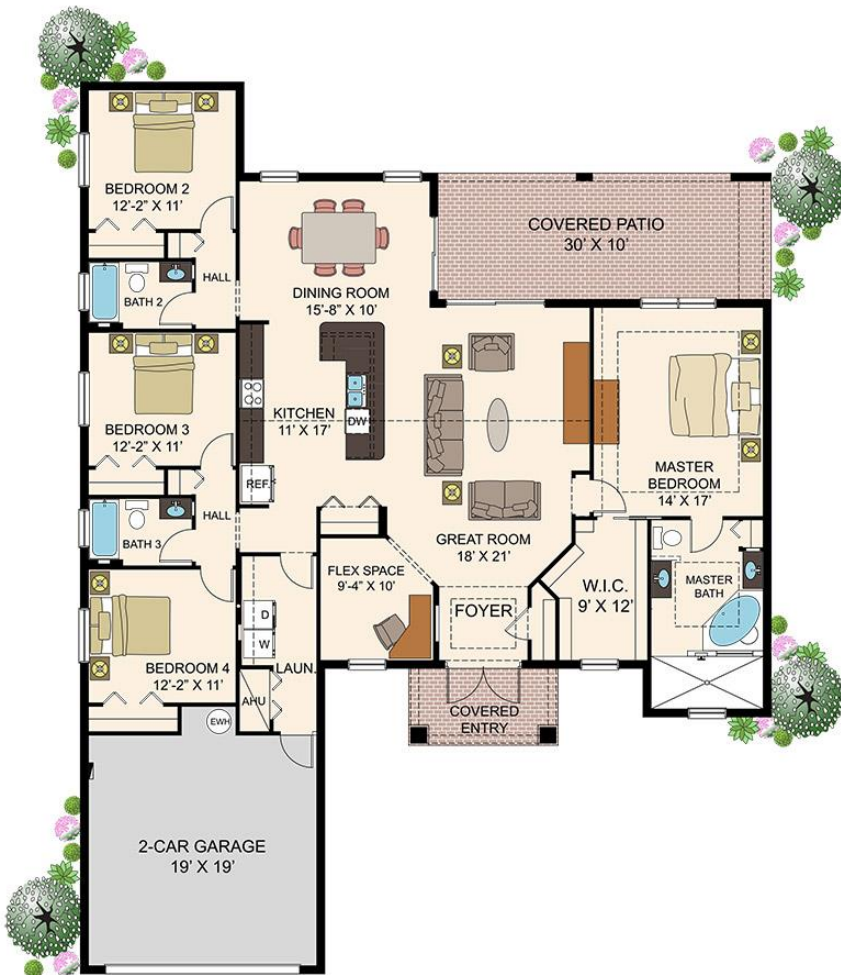
Key Features

The Sage S 5/3 is a new RJM design featuring an open concept with huge master closet and back patio. This new design offers 4 bedrooms, a den, 3 bathrooms, a 2 car garage, and much more.

- ✓ Open Floorplan
- ✓ 4 Bedrooms
- ✓ Flex Space
- ✓ Large Back Patio
- ✓ HUGE master closet
- ✓ 3 Bathrooms
- ✓ 2 Car Garage
- ✓ Sports Shower

About RJM Custom Homes

RJM is family owned and operated custom home builder who has built more than 1,000 homes in South Florida over the past 2 decades.



Floorplans are intended for informational purposes and are not exact or drawn to scale.

Copyright 2020 RJM Custom Homes

West Palm Beach: 5511 Royal Palm Beach Blvd., West Palm Beach, FL 33411

Port St. Lucie: 2951 SW Savona Blvd, Port St. Lucie, FL 34953



Contact Us
 West Palm Beach: (561) 204-3760
 Port St. Lucie: (772) 446-9238
www.rjmhomes.net
sales@rjmhomes.net

Sage 5/3 ME

4 Bedrooms, Flex Space, 3 Baths, 2 Car Garage

Living Area: 2,571 SQ. FT
Covered Entry: 66 SQ. FT
Covered Patio: 307 SQ. FT
2/Car Garage: 407 SQ. FT
Total 3,351 SQ. FT



Key Features

The *Sage 5/3 ME* is a custom edition version of RJM's *Sage 5/3* and includes upgrades to windows, stucco, and roofing.

- ✓ 4 Bedrooms
- ✓ Flex Space
- ✓ HUGE Master Closet
- ✓ Additional Windows
- ✓ 3 Bathrooms
- ✓ 2 Car Garage
- ✓ Metal Roof
- ✓ Planked Stucco
- ✓ Courtyard Entry

About RJM Custom Homes

RJM is family owned and operated custom home builder who has built more than 1,000 homes in South Florida over the past 2 decades.



Floorplans are intended for informational purposes and are not exact or drawn to scale.

Copyright 2020 RJM Custom Homes

West Palm Beach: 5511 Royal Palm Beach Blvd., West Palm Beach, FL 33411

Port St. Lucie: 2951 SW Savona Blvd, Port St. Lucie, FL 34953